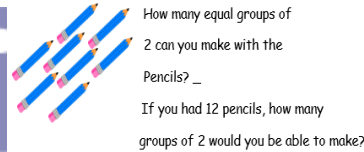


Year One

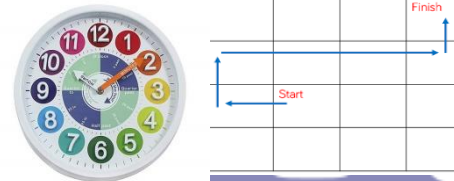
Place Value – Numbers to 20
Addition and Subtraction - Numbers within 20, including recognising money
Multiplication – place value to 50 and grouping numbers



Division - Grouping small quantities
Numbers to 100
Length and Height – for example long/short
Shape – recognise 2D and common 3D shapes
Fractions - halves and quarters



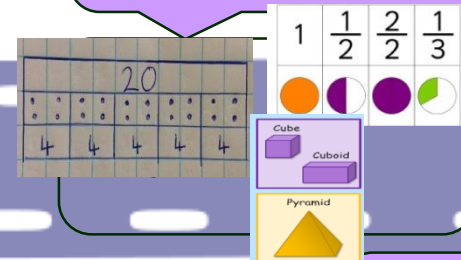
Position and direction – whole/half/quarter and three quarter turns
Weight and volume – heavy/ light, full, half full empty
Time – hour and half hour
Four operations recap + - x ÷



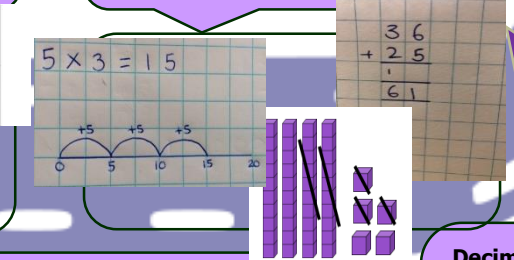
Position and direction – Patterns and sequences . Clockwise/anti-clockwise. Right angles for a quarter
Weight and volume – kg/g
Temperature –degrees
Time –tell the time to 5 mins, quarter past and quarter to. Number of minutes in and hour and hours in a day
Consolidation and Investigations



Division – 2s, 5s and 10s
Length and Height –cm/m
Shape – Properties of 2d and 3D shapes
Fractions – find write and name $\frac{1}{3}, \frac{1}{4}, \frac{2}{4}, \frac{3}{4}$

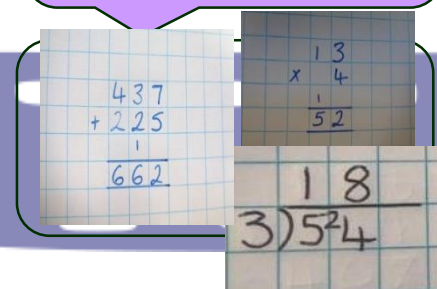


Place Value – Numbers to 100
Addition and Subtraction - Numbers within 100, including amounts of money
Multiplication – 2s, 5s and 10s

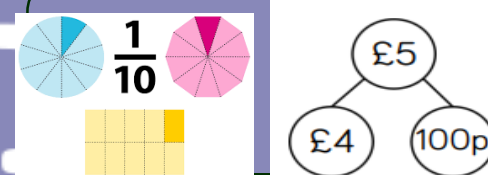


Year Two

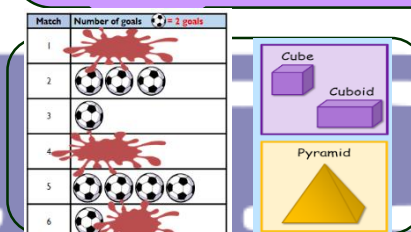
Number and Place Value – numbers to 1000
Addition and Subtraction – Three digit numbers to ones, tens and hundreds
Multiplication and division – 3,4 and 8 times tables



Multiplication and division
Length, area and perimeter - measure, compare add and subtract lengths (m/cm/mm)
Fractions Compare and order unit fractions
Mass and Capacity



Decimals inc Money – add and subtract amounts to give change using both £ and p in practical situations
Time – tell and write the time with increasing accuracy to the nearest minute
Statistics – Pictograms and tables
Shape/Geometry – Draw 2-D shapes and make 3- D shapes



Year Three

